

essenze

by Matteo Thun & Antonio Rodriguez

EFFEBIQUATTRO

Milano



essenze

by Matteo Thun & Antonio Rodriguez

EFFEBIQUATTRO
Milano



"essenze" proposes three new different material and color worlds: Light, Warm and Dark created for different moods of interior ambiances. Each style uses different sources of wood, natural textures, fluted glass and finishes that convey tactility and sensoriality.

The collection of doors, sliding doors and room dividers is all about nature and simplicity, about silent luxury.

For more than 50 years, EFFEBIQUATTRO has been committed to achieving the highest quality and the latest technological advances, offering Italian interior solutions that cannot be found anywhere else.





light essences



8
sandy white
lacquer



9
sandy white
moirè fabric



11
light woven raffia



12
light fumè fluted glass





15
natural oak



warm essences



18
woven raffia





21
natural Vienna straw

22
brick red
lacquer



23
brick red
moiré fabric



dark essences



26
dark stained fluted oak

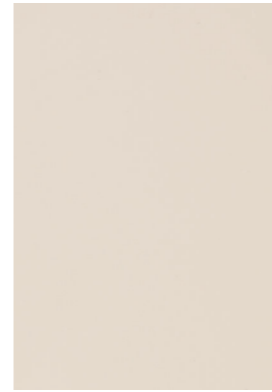




29
dark woven raffia

light finishes
material board

NO FRAME
DOORS, CABINET DOORS AND WALL PANELS



SK06 - sandy white
lacquer



RVC - natural oak

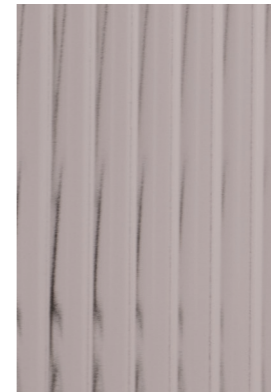


RVCC - natural
fluted oak

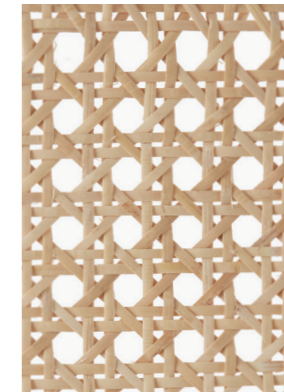
WITH FRAME
GLASS DOORS



VEC010 - fluted glass

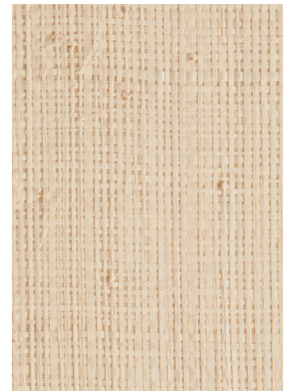


VEC001 - light
fumè fluted glass



PA001 - light
Vienna straw

UPHOLSTERED DOORS



RA001 - light
woven raffia

FRAMES



VBP - pearly
brown



RVC -
natural oak



RVM - moka
stained oak

CABINET INTERIOR



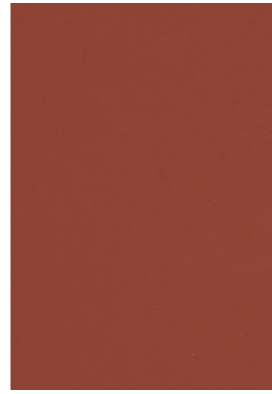
SK06 - sandy white
lacquer



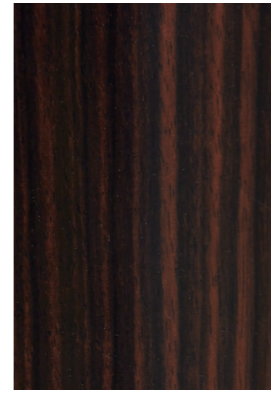
TE001 - sandy white
moirè fabric

warm finishes
material board

NO FRAME
DOORS, CABINET DOORS AND WALL PANELS



SK04 - brick
red lacquer



EBA - glossy ebony

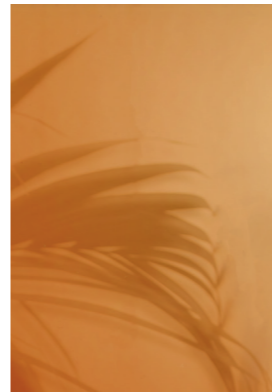


RVM - moka
stained oak



RVMC - moka
stained fluted oak

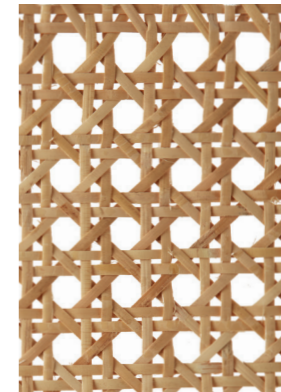
WITH FRAME
GLASS DOORS



VEL002 - amber glass

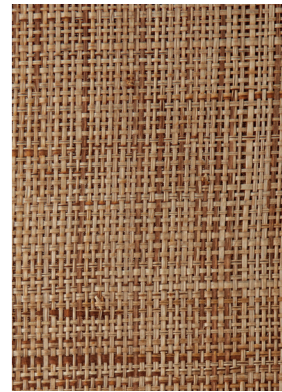


VEC002 - fumè
fluted glass



PA002 - natural
Vienna straw

UPHOLSTERED DOORS



RA002 - woven raffia

FRAMES



VBP - pearly
brown

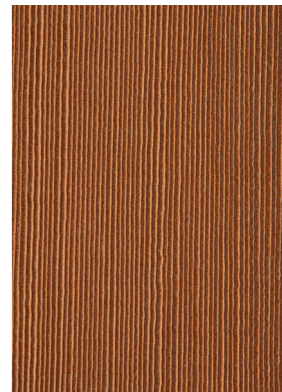


RVM - moka
stained oak

CABINET INTERIOR



SK04 - brick
red lacquer



TE002 - brick
red moirè fabric

dark finishes
material board

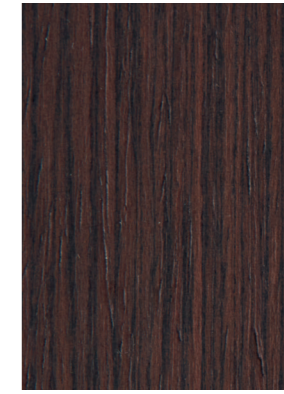
NO FRAME
DOORS, CABINET DOORS AND WALL PANELS



SK09 - navy
blue lacquer



EBA - glossy ebony



RVS - dark
stained oak

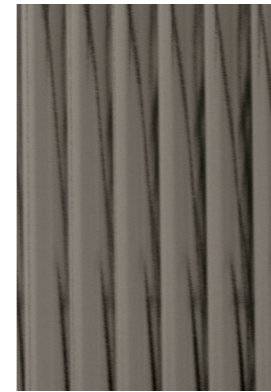


RVSC - dark stained
fluted oak

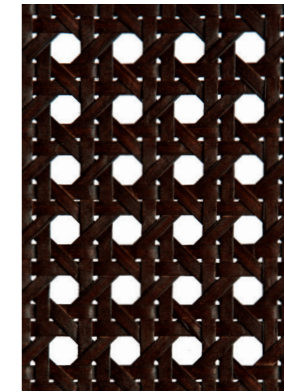
WITH FRAME
GLASS DOORS



VEL003 - dark fumè
glass



VEC003 - dark fumè
fluted glass



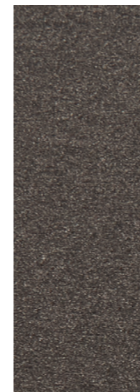
PA003 - dark
Vienna straw

UPHOLSTERED DOORS



RA003 - dark
woven raffia

FRAMES

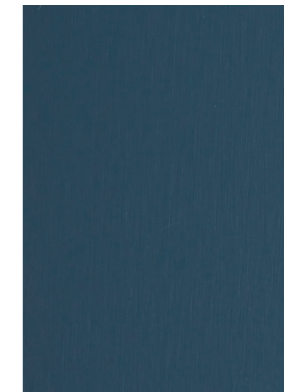


VBP - pearly
brown



RVS - dark
stained oak

CABINET INTERIOR



SK09 - navy
blue lacquer



TE003 - navy
blue moirè fabric



Design
Matteo Thun & Antonio Rodriguez

Catalogue art direction, graphic design
Elena Pelosi

Photo
Matteo Lavazza Seranto, Mattia Aquila
Jill Burrow, Neslihan, Aditya Aiyar, PNW production

Pre-press
MD Trading Srl

Print
Grafiche Mariano Srl

Actual colors can be different than those indicated in the finishes section due to the typographical reproduction.

EFFEBIQUATTRO Spa

Viale Edison 47
20831 Seregno (MB)
Tel.+39 03622771
www.effebiquattro.it



